



newhope

Annual Report— Fiscal Year 2014

*“ENDING DOMESTIC AND SEXUAL VIOLENCE
IN OUR COMMUNITY”*

A SPECIAL MESSAGE FROM THE BOARD PRESIDENT



Age 35 is typically the age at which most of us start to notice subtle changes in how we look. Little “crows feet” around the eyes, wrinkles on our foreheads, a few gray hairs.... all of the typical signs that we are not getting any younger!

New Hope, Inc. is celebrating its 35th anniversary this year and the agency is also undergoing subtle changes. First and foremost is the fantastic new logo – the horizon - that has recently been adopted. The horizon represents hope, light, new beginnings, and “better things to come”. The horizon represents the hope and promise of New Hope, Inc. that working with our clients and community partners we can and will end domestic and sexual violence. The new emblem is also designed to better represent all of the individuals that we serve including men and members of the LGBTQ (Lesbian, Gay, Bisexual, Transgender, Questioning) community as well as women and children.

By the time we turn 35 most of us tend to feel more in control of our lives. Many of us are settled into our careers, have bought homes, and started families. We have developed goals for our future and feel well on our way to achieving them. New Hope, Inc. is setting goals for its future as well. With the recent departure of our Executive Director, the agency is assessing its position in the industry and working on a strategic plan that will be its footprint for the future. We are fortunate to have hired an Interim Executive Director, Marcia Szymanski, with vast experience in the domestic violence/sexual assault field who is well-suited to the task of facilitating this process while providing guidance and leadership to the agency during the search for a new Executive Director.

Some may look at 35 as “middle age”, but at New Hope, Inc. 35 years is just an indicator that for three-and-a-half decades this agency has worked tremendously hard to end domestic and sexual violence. As always, the agency’s achievements and successes are because of all of you. Our staff, board, volunteers, funders, and donors are the backbone of this agency and you share in each and every success.

Many Thanks,



Lisa Nelson
Board President, New Hope, Inc.

BOARD OF DIRECTORS

Michael Carroll, *Treasurer*
Patricia Barr, *Vice President*
Colleen Hughes-Paterno, *Clerk*
Kathy DelloStrito
Tom Dion
Ruthanne Withers
Laura Mann
David Millet
Erica Tolles

SENIOR MANAGEMENT

Marcia Szymanski,
Interim Executive Director & President
Benjamin Furman,
Chief Financial Officer
Ruth Zakarin, LICSW
Vice President of Operations

YEARLY ACCOMPLISHMENTS

As in any year, the primary accomplishment at New Hope is the continued work our staff does on a daily basis with clients. The numbers shown further in the report tell one story, but the true story is the courage and resiliency of clients to move from victim to survivor.

“There were many accomplishments in the past year, some huge, some small but each one was equally important to the success of each family. Seeing the transformation of each family from beginning of the program until they completed it is indescribable! The transitional living program has given families a chance to get their lives back. The opportunity to learn, grow and heal from domestic violence. They are able to learn skills necessary to live on their own. We all have different paths in life. Some families are not able to choose their path. The transitional living program gives them that choice.” -Melissa, TLP Coordinator



NEW MILFORD OFFICE

In 2014 New Hope expanded services into Milford, MA with the opening of our new office on Main Street. Since its opening, the office has already provided counseling and advocacy services to **155** clients with **771** sessions.

MANAGER OF DATA & TRAINING

New Hope is committed to high quality, best-practices throughout all of our services. To that end New Hope created a new position, Manager of Data and Training, to quantify the work and measure our impacts, as well as providing key data on emerging trends, gaps in services, and needed resources.

NEW WEBSITE & NEW LOGO



Finally, check out our new website and the new logo. Thanks to Johnson & Wales for their assistance in the design. To view the website using our smart phone or table, scan the QR code or simply type www.new-hope.org



NEW HOPE FISCAL YEAR 2014 NUMBERS

NEW START TRANSITIONAL LIVING PROGRAM (TLP)

9 Adults & 12 Children

Secured individual apartments through our Transitional Living Program (TLP).

EMERGENCY SHELTER

137 Individuals

92 Adults & 45 Children

Spent time at one of our emergency shelters.

HOUSING STABILIZATION

44 Individuals

Received assistance with funding for rent, utilities and other costs necessary to provide stable & reliable housing.



"Thank you for everything from the beginning to the end of this program. I had the best Christmas and the best time of my life. Because without you we would never be here. Thank you for making it possible for my family to be here. Have a great time with the next people like us. Sincerely your friend."

- TLP CLIENT

SEXUAL ASSAULT MEDICAL ADVOCACY

Our trained Sexual Assault Advocates provided medical accompaniment to

21 Sexual Assault Survivors

COMMUNITY BASED ADVOCACY

224 Individuals

Worked with community advocates who assisted them during **935 Sessions** in finding resources to enhance their safety while staying in their home community, hopefully minimizing future risk and preventing the need to flee to shelter.

COUNSELING

Our dedicated staff of trained counselors offered

359 Individuals

2,699 Counseling Sessions

consisting of children, adolescent, and adult survivors of domestic and sexual violence.

RESPECT

Within the last year, a total of

150 Individuals

Participated in

559 Group Sessions



NEW HOPE FISCAL YEAR 2014 NUMBERS

HOTLINE

1,619 Callers

Received crisis intervention, risk assessment, and safety planning by our trained Hotline specialists, who also provided them with information about New Hope services and other community resources.

CIVILIAN POLICE ADVOCATE

95 Individuals

Worked with our Civilian Police Advocate stationed in the Attleboro Police Department and received services such as crisis intervention, safety planning, and assistance with the criminal justice system.

3,964 Individuals

Received education and training on issues relating to domestic and sexual violence



OUTREACH & EDUCATION

New Hope's education and outreach staff provide prevention and education programming to individuals of all ages residing in New Hope's catchment area. Raising awareness on the issues of domestic and sexual violence, as well as New Hope's services.

SUPERVISED VISITATION

1,408 Supervised Visits

Took place in the last fiscal year, consisting of

141 Non-Custodial parents

SAFEPLAN

2,018 Individuals

Were assisted with obtaining restraining and harassment protection orders by one of our SAFEPLAN Advocates stationed in one of our seven district courts and one probate court.

CLIENT STORY

"*Client*" is an immigrant who came to court for a restraining order against her husband. He had been extremely abusive to her leaving her with bruises all over her body. He told her that if she told anyone, he would have her deported and she would not be able to see her children ever again. The SAFEPLAN advocate helped "*Client*" to fill out the proper paperwork to obtain the order and accompanied "*Client*" before the judge. The SAFEPLAN Advocate gave "*Client*" information about.....

To finish reading this client story and to read more client stories, scan this QR code with your smart phone or tablet.



THANK YOU TO OUR VOLUNTEERS



New Hope relies heavily upon the generosity of people who share their time within our offices and in our programs— providing a collective donation of thousands of volunteer hours each year.

In Fiscal Year 2014, our volunteers served:

6,468 Volunteer Hours

At a value of

\$99,542 to our agency

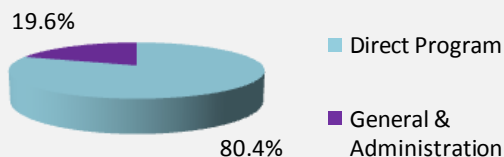


FINANCE REVIEW

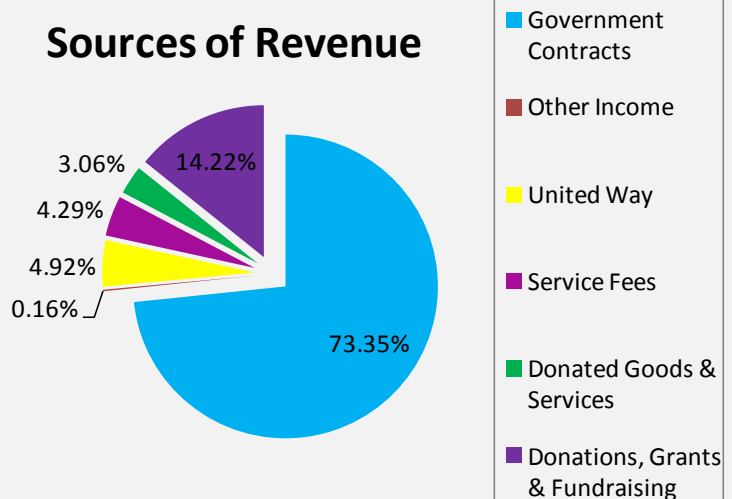
Fiscal 2014 Financial Data*

Total Support & Revenue	\$ 2,508,437
Total Expenses	\$ 2,402,183
Excess/(Deficit) of Support & Revenue over Expenses	\$ 106,254
Net Assets - 7/01/2013	\$ 925,730
Addition(Reduction) in Net Assets	\$ 84,574

Application of Funding



Sources of Revenue



**This data has been prepared for presentation prior to completion of the annual audit. Copies of the audited financial statements will be available upon request.*

THANK YOU TO ALL OUR EVENT SPONSORS!

HIGHLIGHTS OF HOPE

MATCHING GIFT SPONSOR



ROCKLAND
TRUST

SPONSORS:

Dean College
Milford Regional Medical Center
Taunton Federal Credit Union

GOURMET GUYS

LEADERSHIP SPONSORS:

Bristol County Savings Bank
North Bristol Association of Realtors
Professional Fire Fighters of Massachusetts
Sensata Technologies
SpencerBANK
Taunton Federal Credit Union

PARTNERSHIP SPONSORS:

Arbella Insurance Foundation
Attleboro Police Association
Mansfield Cooperative Bank
New Vision Pioneers
Nimiroski Insurance
Sharon Credit Union

WINE, BEER, FOOD

PRESENTING SPONSORS:

Lori Anderson, First Vice President of
Merrill Lynch Wealth Management
Gallo Moving and Storage
Verizon

PARTNERSHIP SPONSORS:

HarborOne Bank
Kensington Real Estate Brokerage
Cryan Landscape Contractors
Sallale Financial Strategies LLC

LEADERSHIP SPONSORS:

Land Development-Northeast, Inc
Sensata Technologies

The Sun Chronicle, Media Sponsor
Briggs Garden & Home, Venue Sponsor
StayGreen Irrigation, Inc, Lighting Sponsor
Kelly Boulevard Wines & Liquors and Route
106 Wine and Spirits, Beer & Wine Sponsor
Nelson Family Dental, Wine Glass Sponsor



For a full list of this year's sponsors and donors, visit our website by scanning the QR code or visiting:

www.new-hope.org/FY14annualreport

ADMINISTRATIVE OFFICES

MAIN OFFICE	TAUNTON OFFICE	MILFORD OFFICE	WORCESTER OFFICE <i>MJ Leadenham Center</i>
140 Park Street Attleboro, MA 02703 (508) 226-4015 F: (508) 226-6917	18 Broadway, Ste 210 Taunton, MA 02780 (508) 824-5205 F: (508) 880-3249	291 Main Street Milford, MA 01757 (774) 462-3202 F: (508) 488-6193	91 Prescott Street Worcester, MA 01605 (508) 753-3146 F: (508) 753-3148

COMMUNITIES WE SERVE

BRISTOL COUNTY:

Attleboro, Berkley, Dighton, Mansfield, North Attleboro,
Norton, Raynham, Rehoboth, Seekonk, Taunton

HAMPDEN COUNTY:

Brimfield, Holland, Wales

NORFOLK COUNTY:

Bellingham, Foxboro, Franklin, Medway, Norfolk,
Norwood, Plainville, Sharon, Walpole, Wrentham

PLYMOUTH COUNTY:

Lakeville, Middleboro

WORCESTER COUNTY:

Auburn, Blackstone, Brookfield, Charlton, Douglas, Dudley,
East Brookfield, Grafton, Hopedale, Leicester, Mendon,
Milford, Millbury, Millville, Northbridge, North Brookfield,
Oxford, Shrewsbury, Southbridge, Spencer, Sturbridge,
Sutton, Upton, Uxbridge, Warren, Webster, Westborough,
West Brookfield, Worcester

COURT ADVOCATE LOCATIONS:

Attleboro, Dudley, East Brookfield, Milford, Taunton
(District & Probate), Westborough, Uxbridge

*Our SAFEPLAN court advocate program is partially supported by the Massachusetts Office
for Victim Assistance (MOVA) through the 1984 VOCA grant from OVC, OJP, US D.O.J.*

CONTACT US

WEBSITE: www.new-hope.org

EMAIL: new-hope@new-hope.org

24-HOUR Domestic and Sexual Violence Hotline V/TTY

1.800.323.HOPE (4673)

RESPECT: 1-877-222-0083

Linea directa para sobrevivientes de abuso sexual

TTY: 1-888-887-7130



GET SOCIAL WITH US



/NewHopeInc



New Hope, Inc.



@NewHopeInc1



/NewHopeInc1